

NOTES:
DO NOT SCALE FROM DRAWINGS. WORK TO FIGURED DIMENSIONS ONLY. ARCHITECT TO BE NOTIFIED OF ALL DISCREPANCIES.

CLIENT:		REVISIONS	
 CAIRN Homes Properties Ltd	DATE	DESCRIPTION	No.

- 1

RENDER/ METAL CLADDING IN SELECTED COLOR
- 2

RENDER IN SELECTED WHITE/ LIGHT COLOR
- 3

SELECTED BRICK IN GRAY COLOR
- 4

SELECTED BUFF BRICK IN LIGHT COLOR
- 5

SELECTED BUFF BRICK IN DARK COLOR
- 6

uPVC WINDOW IN SELECTED COLOR
- 7

MILD STEEL BALCONIES IN SELECTED COLOR
- 8

METAL FRAME IN SELECTED COLOR
- 9

GRILL VENTS

GENERAL NOTES

THIS DRAWING TO BE READ IN CONJUNCTION WITH ARCHITECT'S DRAWINGS, CONSULTANT ENGINEER'S DRAWINGS AND SPECIFICATIONS, AND LANDSCAPE ARCHITECT'S DRAWINGS AND SPECIFICATIONS.

LEVELS GIVEN ON THE APARTMENT BLOCK DRAWINGS ARE GIVEN TO A LOCAL ABSOLUTE ZERO LEVEL. FOR SPECIFIC LEVELS REFER TO ARCHITECT'S CONTEXTUAL ELEVATIONS AND SITE PLAN, AND ENGINEER'S DRAWINGS WHERE LEVELS ARE ALL GIVEN IN RELATION TO LAND SURVEYOR'S BENCHMARK BASED ON MALIN HEAD DATUM LEVEL.

NOTES ON FINISHES:

- ROOF :

APARTMENT FLAT ROOF AREAS TO BE FINISHED WITH SARNAFIL OR SIMILAR.
- WALLS :

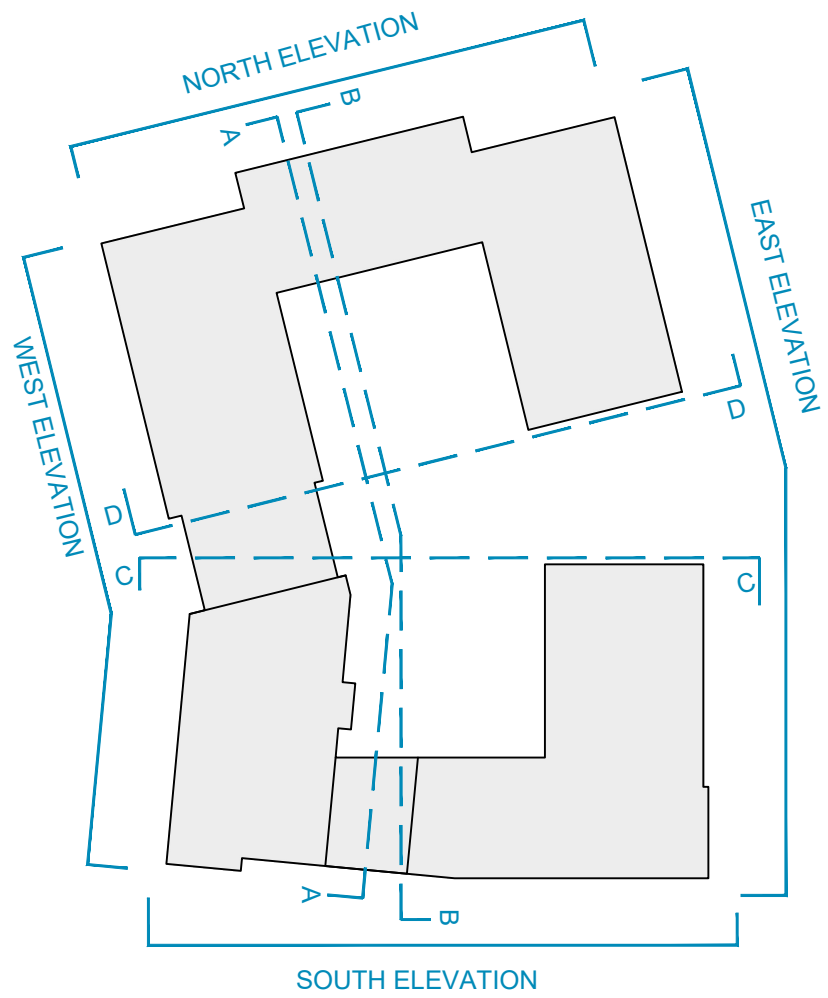
TO BE FINISHED IN SELECTED BUFF BRICKWORK, RENDER, AND RENDER/METAL CLADDING IN SELECTED COLOR , AS INDICATED.
- WINDOWS/DOOR::

ALL WINDOWS AND DOORS, FRAMES AND LEAVES, TO BE uPVC, TO APPROVED COLOUR.
- RAINWATER GOODS :

TO BE uPVC / ALUMINIUM TO SPECIFICATION.
- BALCONIES:

METAL FRAME AND HANDRAILS TO BE MILD STEEL GALVANISED AND PAINTED TO SELECTED COLOUR WITH SAFETY-RAILING BALUSTRADES.

NOTE: FINISHES TO BE AGREED AT COMPLIANCE STAGE




BLOCK B - KEY PLAN



Please refer to Landscape architects drawings for more detail on Landscape / Boundary Treatment

Please refer to Landscape architects drawings for more detail on Landscape / Boundary Treatment

 MCM CROSSAN O'ROURKE MANNING ARCHITECTS	PROJECT TITLE:	DATE:	DRAWN BY:
	SHD AT HOLYBANKS, SWORDS	Mar'22	IDF
	DRAWING TITLE:	SCALE:	REVISION:
	BLOCK B	1:200 @A1	
	Elevations & Sections - Sheet 1 of 2	JOB NO:	DRAWING NO:
	1 Grantham Street, Dublin 8, D08 A8P9, Ireland. Tel: 01-4788700 Fax: 01-4788711 E-Mail: mcm@mcm.com	19022	PL52